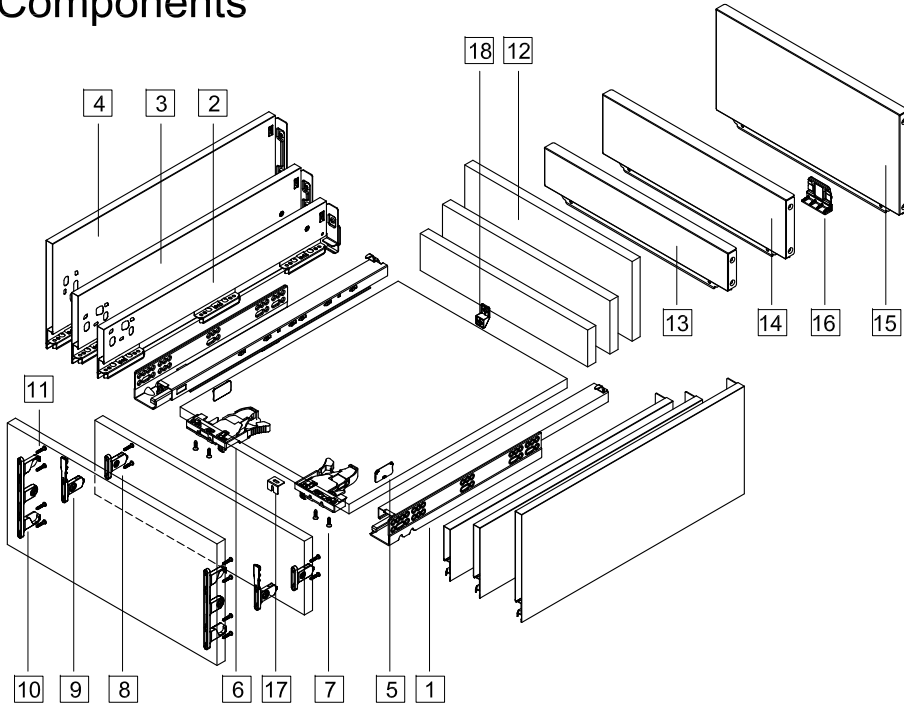


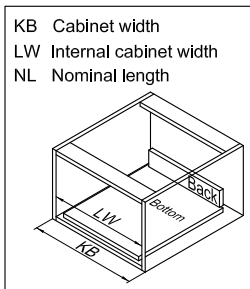
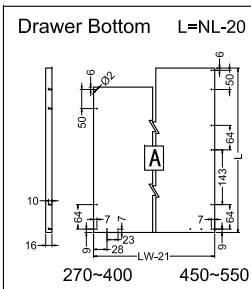
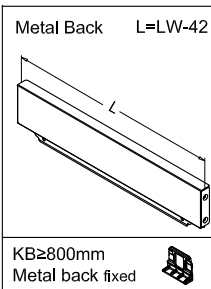
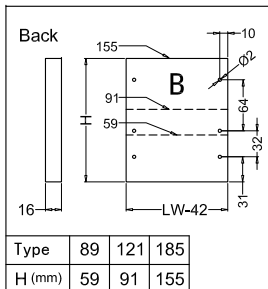
Components



1. Cabinet profiles: L/R	10. 185 Front fixing-brackets
2. 89 Drawer profiles: L/R	11. Front fixing-brackets screw (Ø4x17)
3. 121 Drawer profiles: L/R	12. Drawer back
4. 185 Drawer profiles: L/R	13. Metal back height 89
5. Side cover plate	14. Metal back height 121
6. Locking brackets L/R	15. Metal back height 185
7. Locking brackets screw (Ø3.5x15)	16. Metal back fixed
8. 89 Front fixing-brackets	17. Bottom fixing (for wide drawer)
9. 121 Front fixing-brackets	18. Back fixing (for wide drawer)

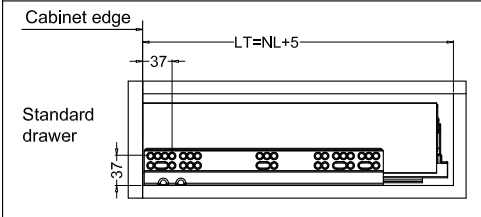
Item No.	Nominal length	Internal drawer length	Min. installation length of drawer
808LB-270	270mm	244mm	275mm
808LB-300	300mm	274mm	305mm
808LB-350	350mm	324mm	355mm
808LB-400	400mm	374mm	405mm
808LB-450	450mm	424mm	455mm
808LB-500	500mm	474mm	505mm
808LB-550	550mm	524mm	555mm

Drawer Back and Bottom Dimensions



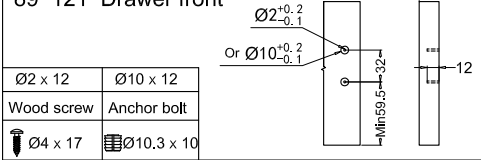
Installation dimensions (mm)

Nominal slide length=NL Internal cabinet depth=LT

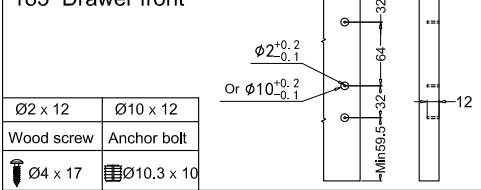


Drawer installation dimensions (mm)

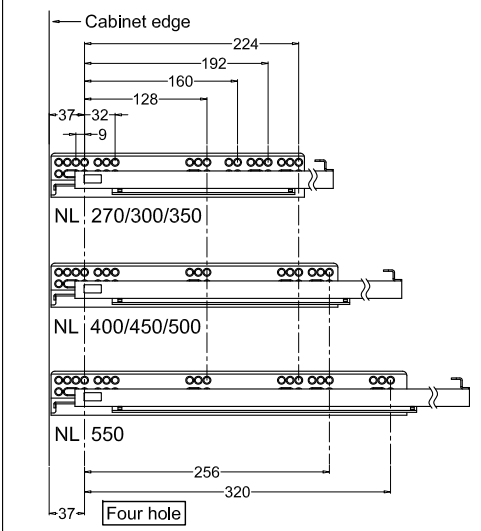
89 121 Drawer front



185 Drawer front

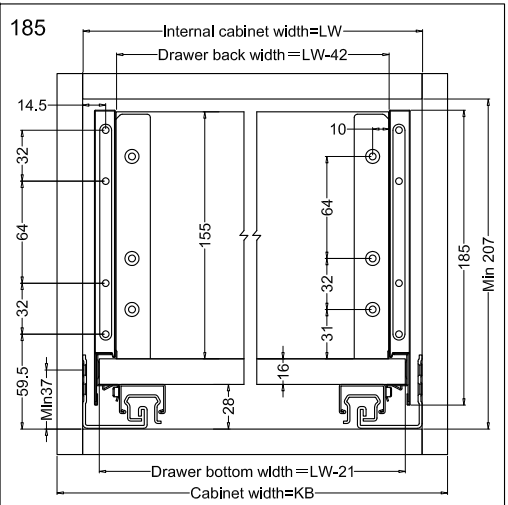
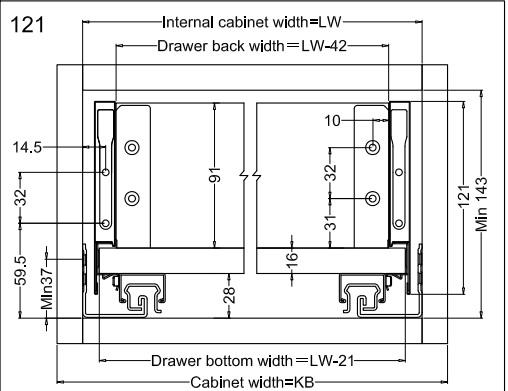
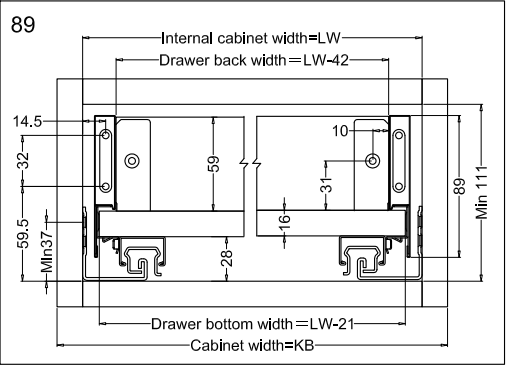


Screw positions of the sides



Drawer installation dimensions (mm)

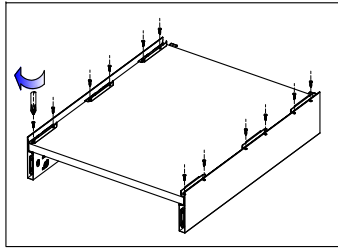
LW=Internal cabinet width



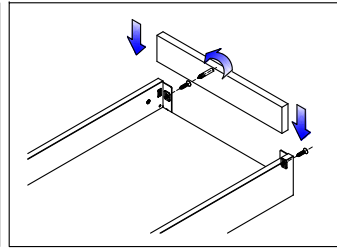
808 Series slender metal drawer

Assembly removal and adjustment

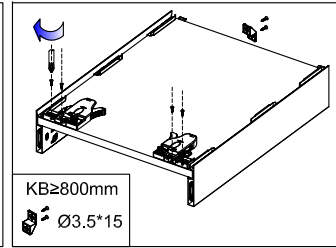
Drawer assembly



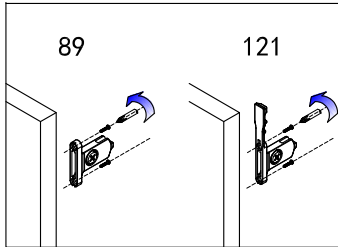
Bottom assembly



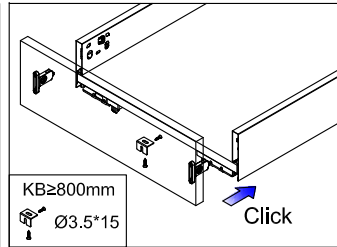
Back assembly



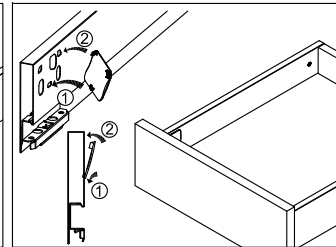
Locking Brackets assembly



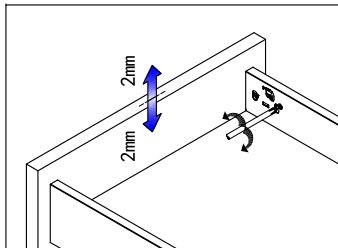
Front assembly



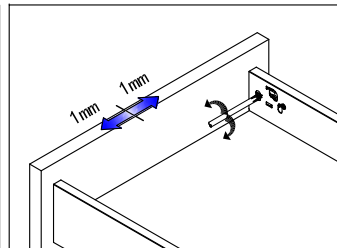
Click



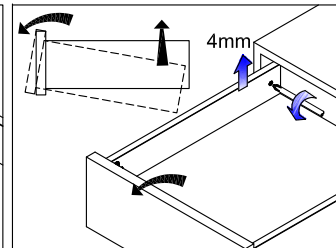
Adjustment



Up&down adjustment

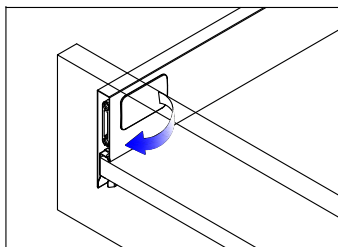


Left&right adjustment

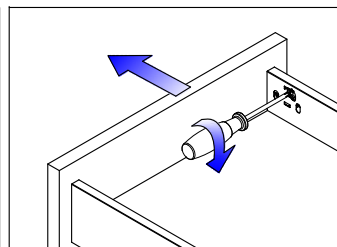


Front slope angle adjustment

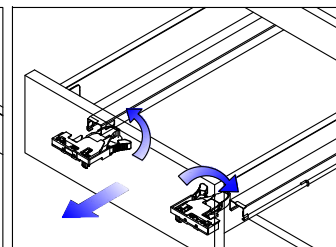
Removal



Tip up the cover and pull out



Removal drawer front

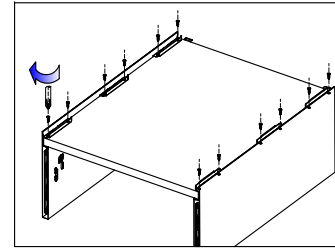


Removal drawer

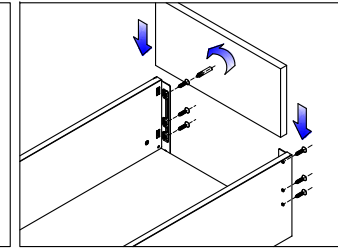
808 Series slender metal drawer

Assembly removal and adjustment

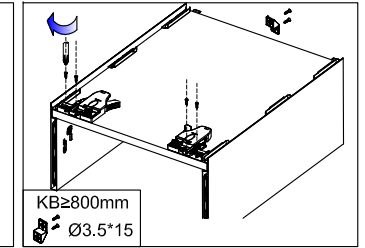
Drawer assembly



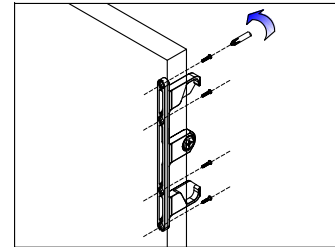
Bottom assembly



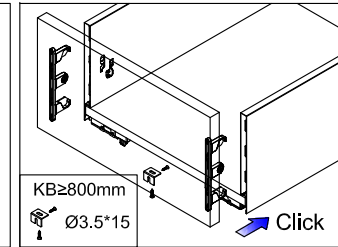
Locking Brackets assembly



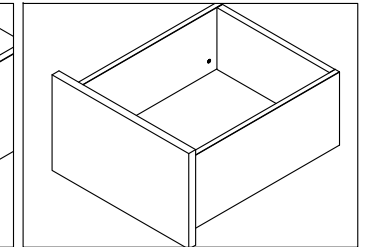
Back assembly



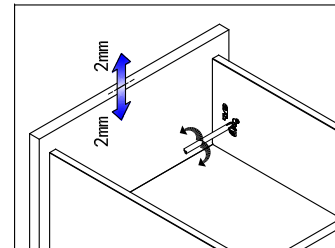
Front assembly



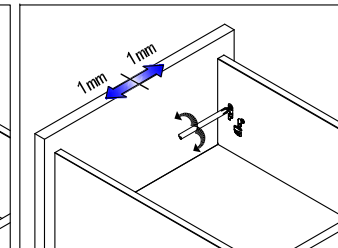
Click



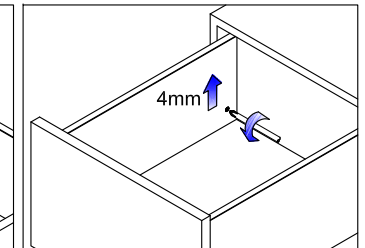
Adjustment



Up&down adjustment

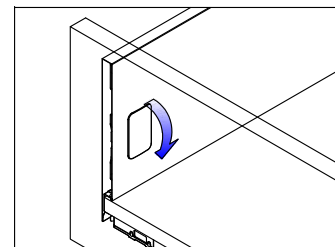


Left&right adjustment

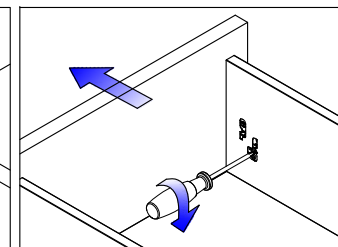


Front slope angle adjustment

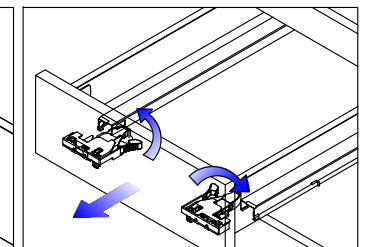
Removal



Tip up the cover and pull out



Removal drawer front



Removal drawer