

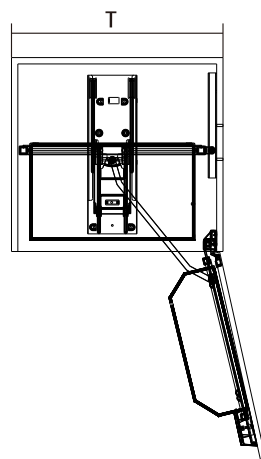
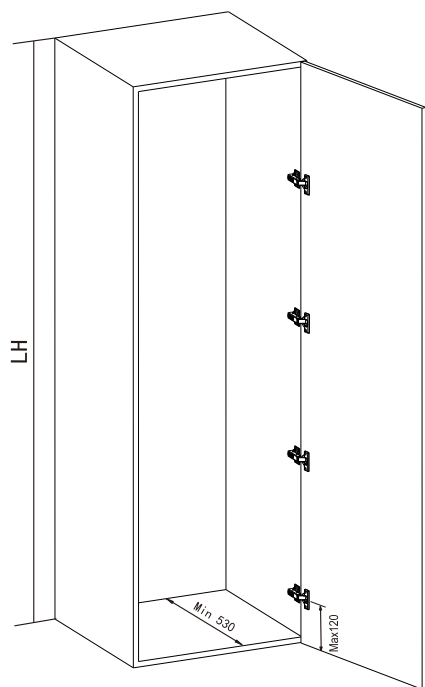
**Soft Close Swivel Pantry  
Instruction Manual**

## 1.0 Before Installation

Before installation, please firstly double check the unit is adaptable to your cabinet (See the product info below)

This manual is for the items listed below:

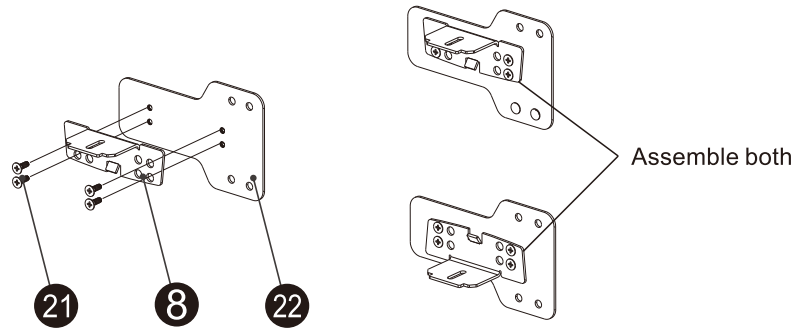
Item	Cabinet Width	Product Size
Soft Close Swivel pantry 4 tiers	450/500	408x500x1335
Soft Close Swivel pantry 5 tiers	450/500	408x500x1625
Soft Close Swivel pantry 6 tiers	450/500	408x500x1825
Soft Close Swivel pantry 4 tiers	600	558x500x1335
Soft Close Swivel pantry 5 tiers	600	558x500x1625
Soft Close Swivel pantry 6 tiers	600	558x500x1825



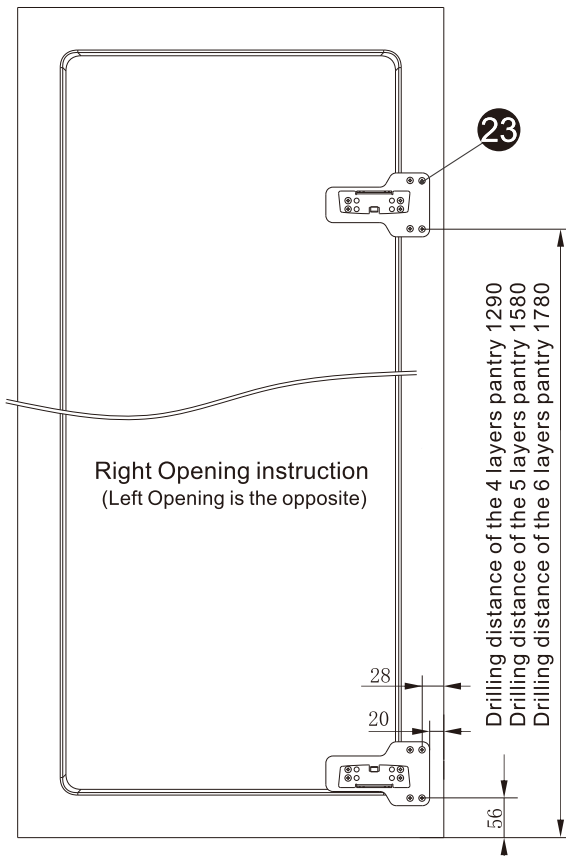
Tiers	LH
4 Tiers	Min1390
5 Tiers	Min1680
6 Tiers	Min1880

# Guiding rail instruction

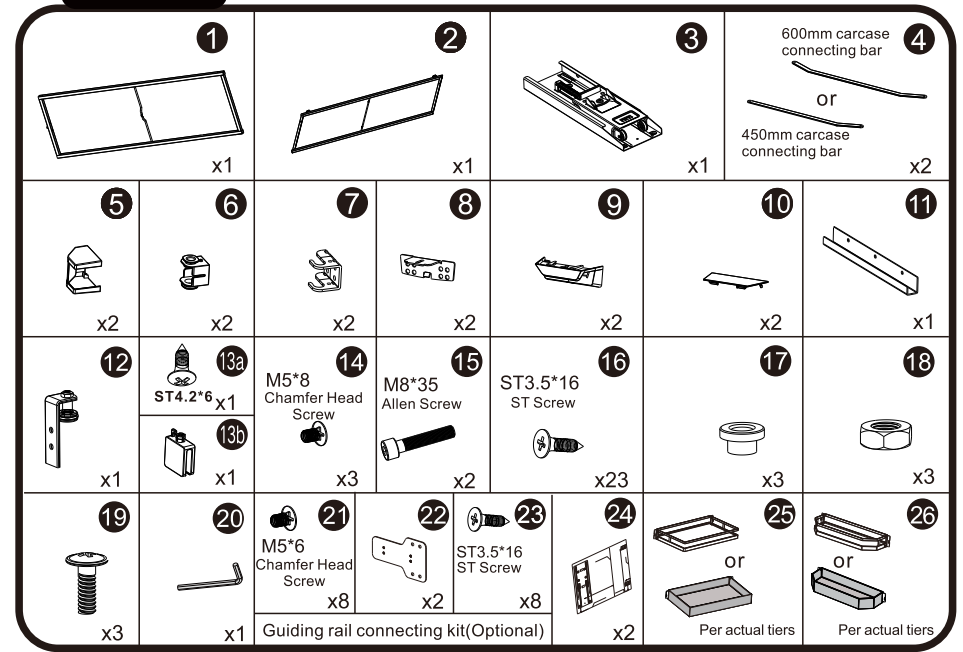
## 1.0 Assembly the guiding rail bracket with the connecting plate.



## 2.0 Installation position

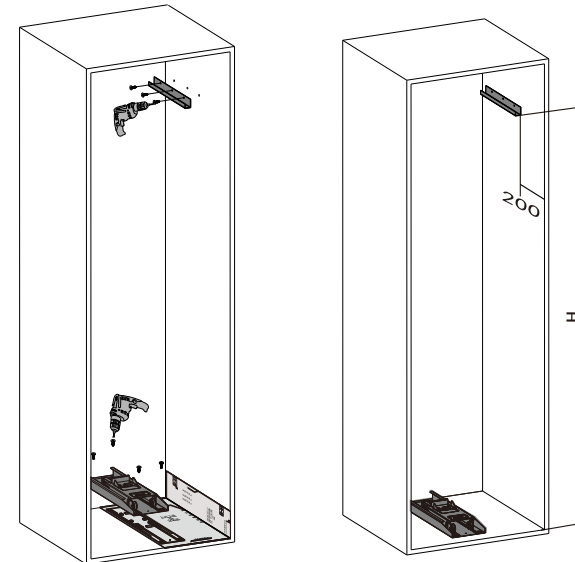


## Accessories



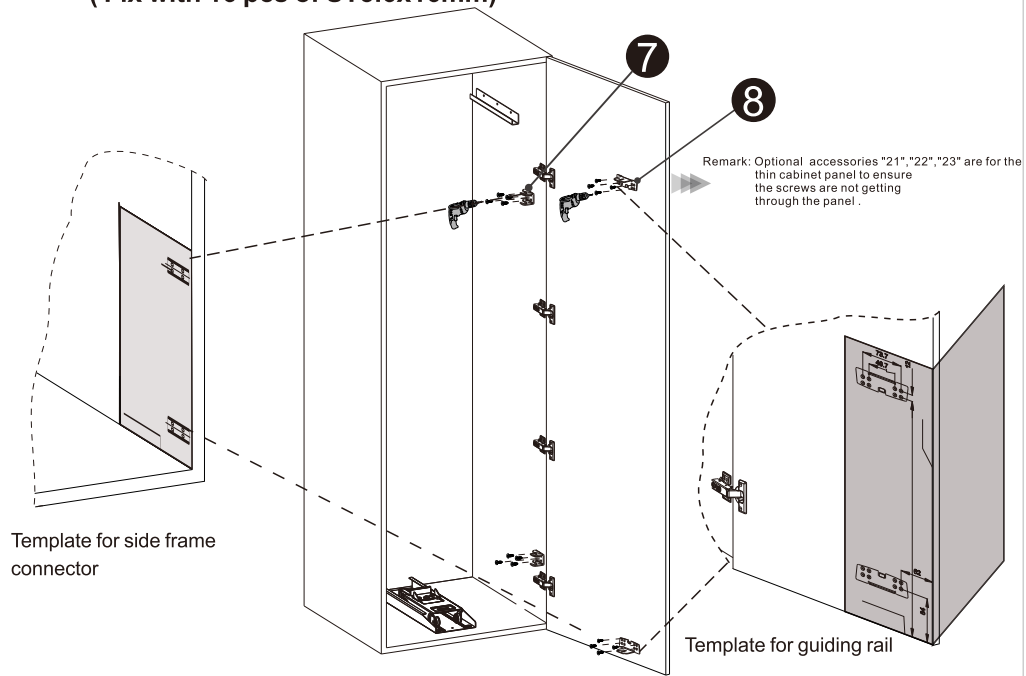
## 2.0 Template and drilling drawing

### 2.1 Upper slider rail and lower slider installation

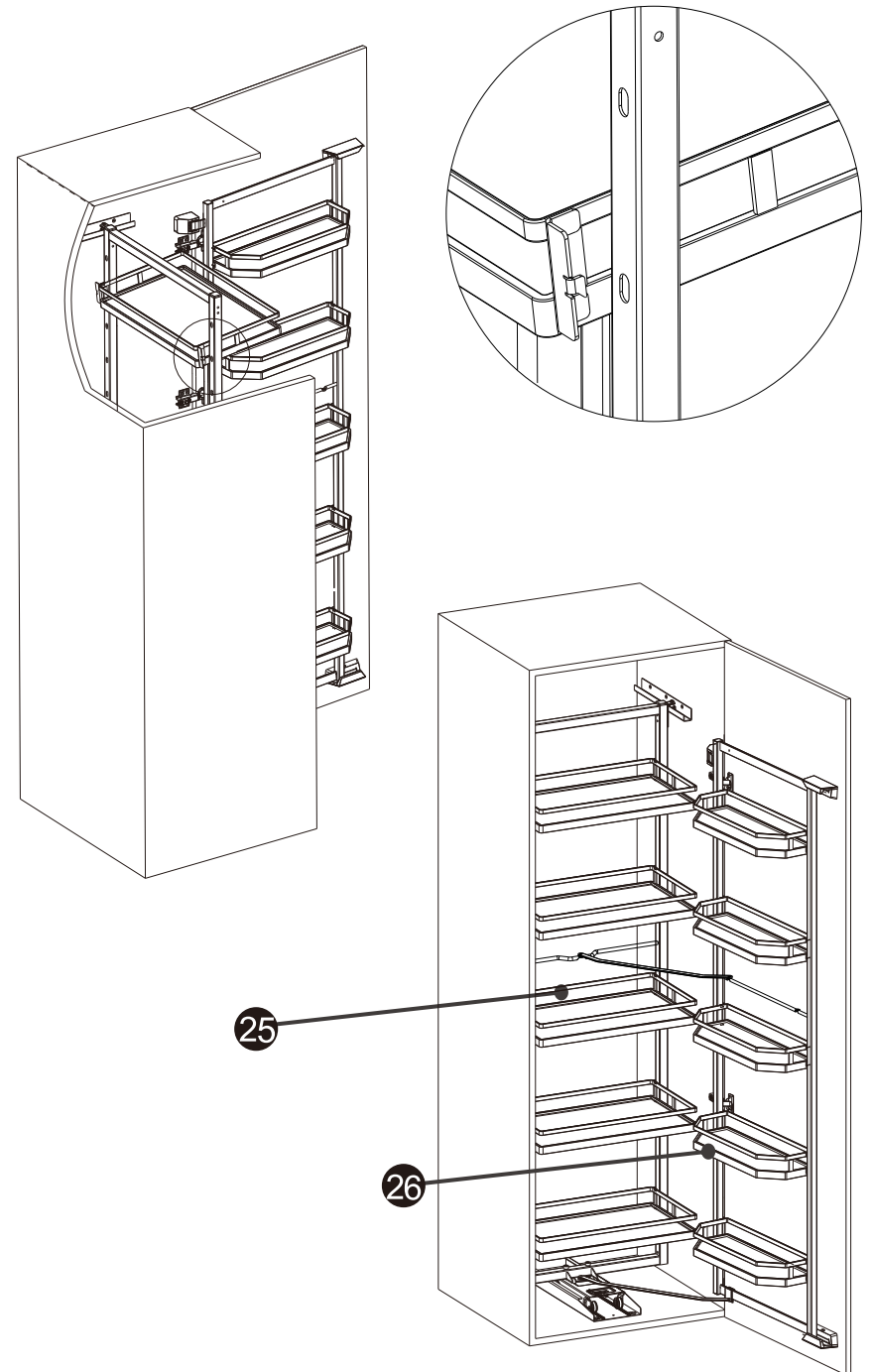


Tiers	H
4 Tiers	1302
5 Tiers	1592
6 Tiers	1792

## 2.2 Instruction for side frame connectors and side frame guiding rail ( Fix with 16 pcs of ST3.6x16mm)

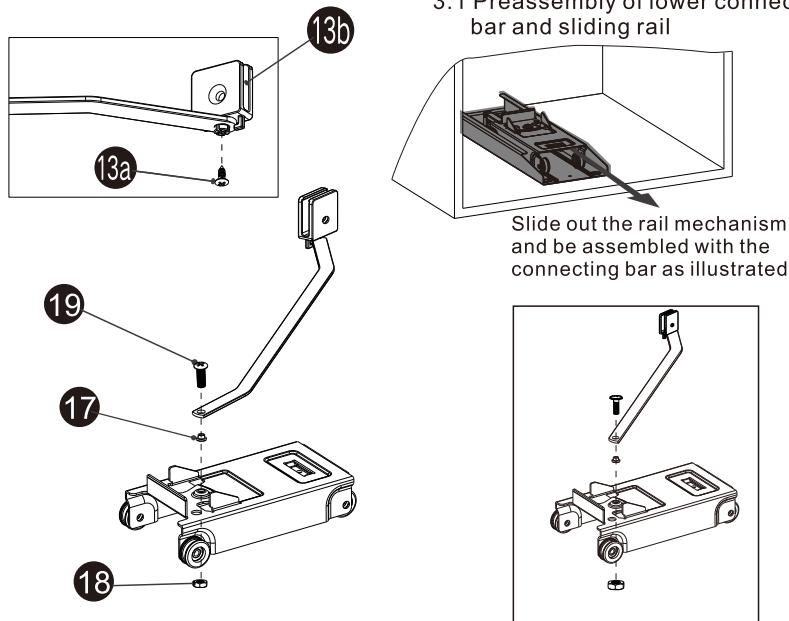


## 4.0 ►► Hang all trays and finish the installation

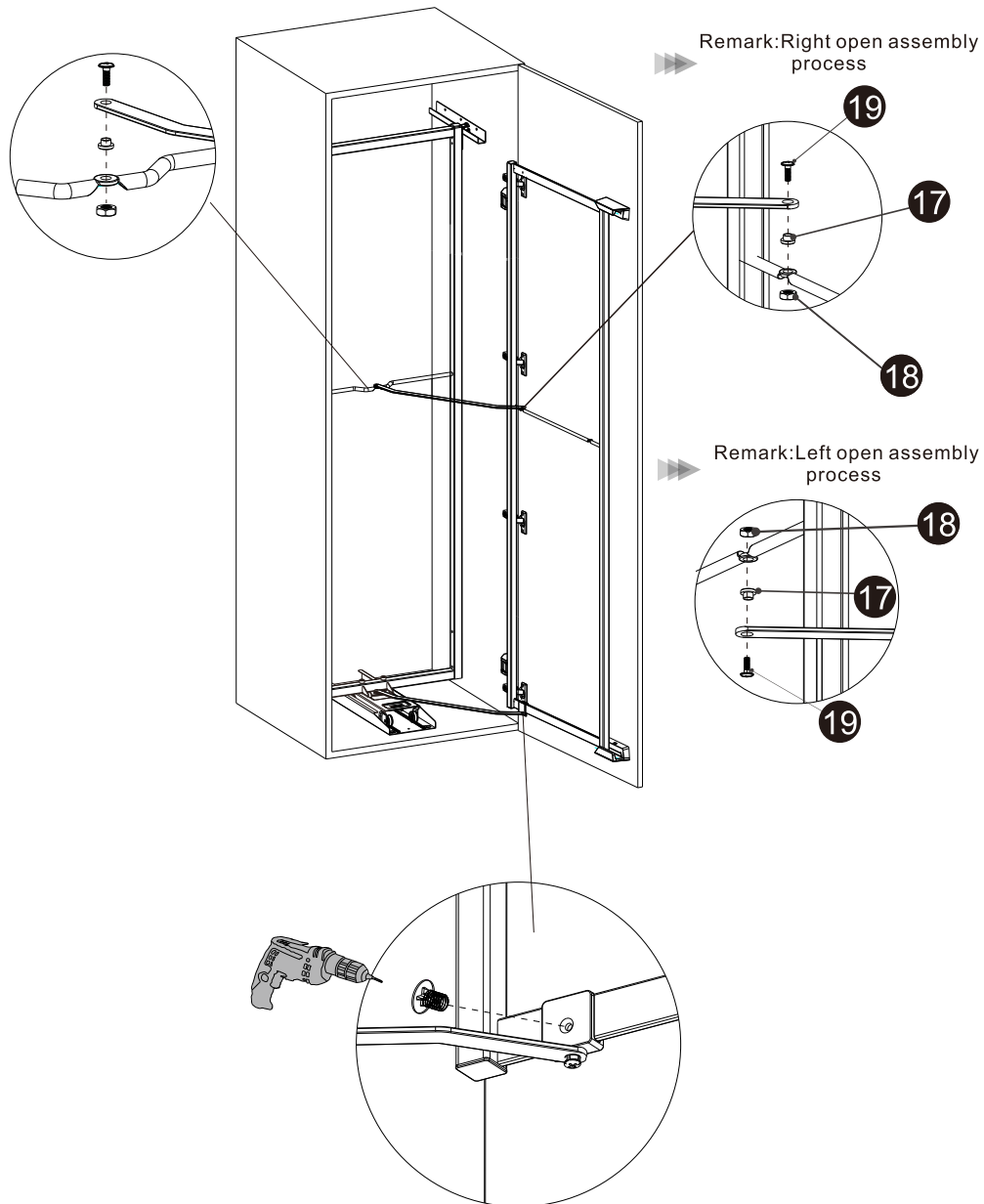


## 3.0 ►► Installation for Mechanism

### 3.1 Preassembly of lower connecting bar and sliding rail

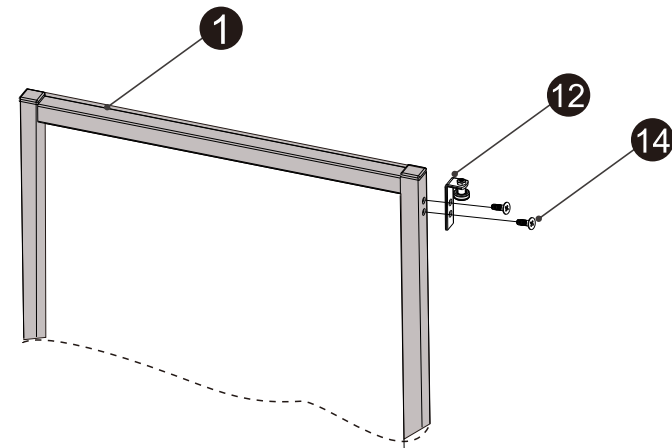


### 3.3 Installation for the connecting bar

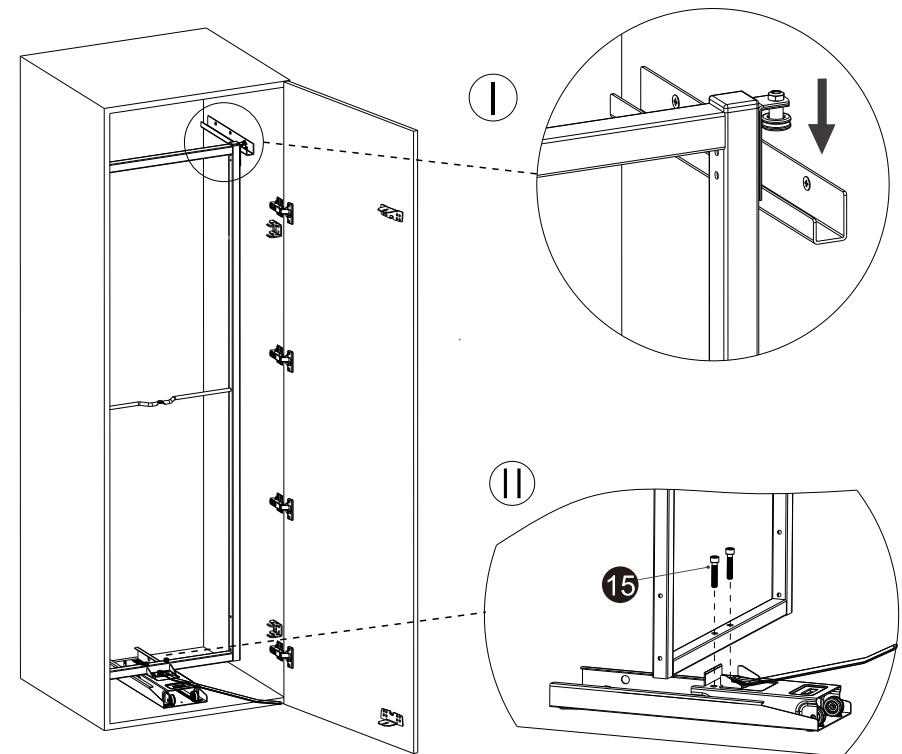


### 3.2 Installation for the inner frame

3. 2. 1 Instruction for the inner frame and sliding wheels  
(Fixed by 2 pcs of chamfer head screws)

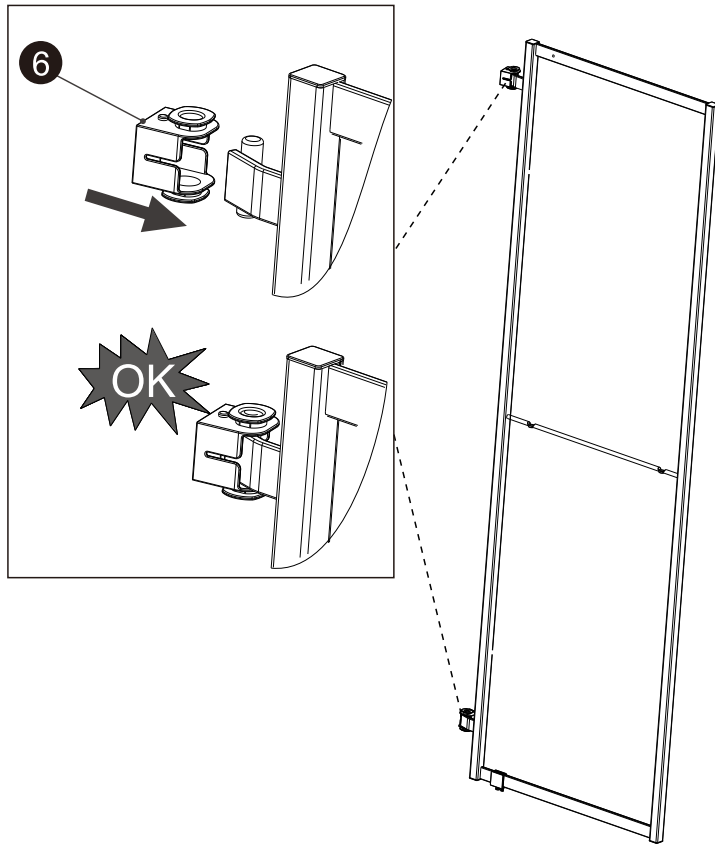


3. 2. 2 Installation for inner frame(Fixed by 2 pcs of allen screws)



### 3.2 Installation for side frame

#### 3.2.1 Preassembly for the side frame



#### 3.2.2 As illustrated below, install the side frame step by step per installation below.

