

IMUNDEX

IMUNDEX

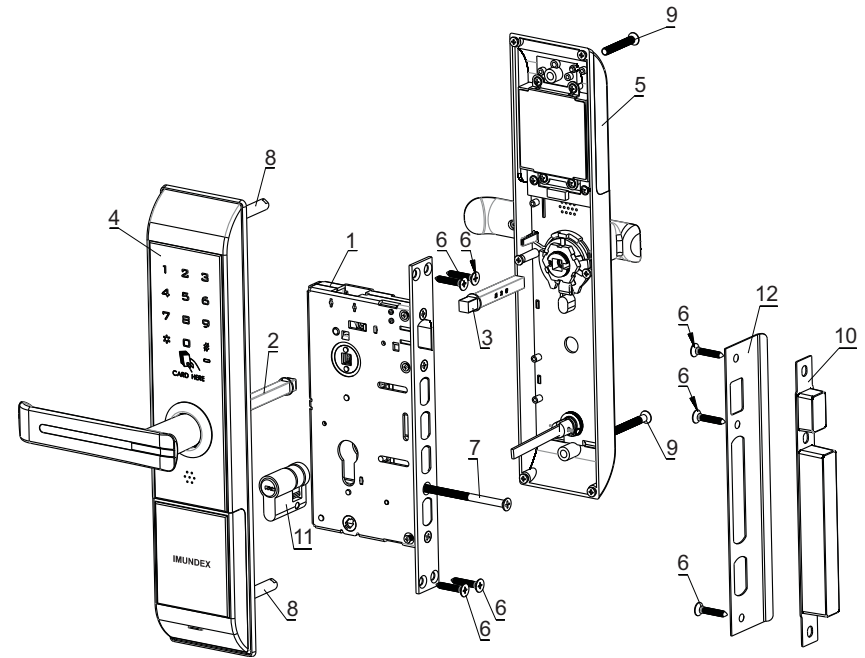


89C87T Touch Door Lock Instruction Manual

Content

1. Exploded drawing	2
2. Product advantages and specifications.....	3
3. Technical parameters.....	3
4. Functions and Operations.....	4-9
5. Sound indicates.	10
6. Using emergency key	10

1. Exploded drawing (See picture)



No.	Name	Quantity
1	Mortise set	1
2	Front square bolt	1
3	Back square bolt	1
4	Front plate set	1
5	Back plate set	1
6	M4x25 Tapping screw	7
7	Cylinder screw	1
8	M5xM6 screw bolt	2
9	M5 Semi-tapping screw	2
10	Strike plate box	1
11	Cylinder (with keys)	1
12	Strike plate	1

2. Product advantages and specifications

- Zinc alloy materials.
- With the function of anti-peeped passwords; supports 24 digits messy code login.
- High technology for the touch panel with high sensitivity and immunity.
- Waterproof, Moisture-proof and Mildew.
- The main board fits for harsh environments due to it has passed the test of extreme temperature, shock and aging.
- CPU adopts original Philips chip.
- Lock of heaven and earth: locked by lifting up the handle, high security heaven and earth pull rod interlock.
- Convenient to replace for mechanical lock - highly optimized for general use - no need to punch holes for replacement.
- Heaven and earth pull rod locker(It's easy to replace for anti-theft mechanical locker)
- Modern fashion type of panel.
- Optional ways to open the lock (Password or card, password + card, Key)
- Power system for emergency: DC9V batteries backup power interface.

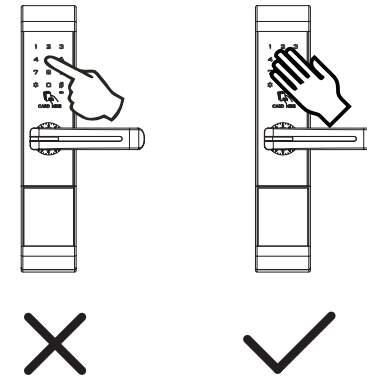
3. Technical parameters

Apply to	ID card
Induction way	Recognized by Microwave
Capacity of passwords	200 groups
Capacity of cards	800 cards
Power supply	DV4.5V~6.5V, 4*1.5V AA Alkaline batteries
Static current	<45 uA
Working Current	<350mA
Low voltage alarm	Sound and light alarm when voltage is below 4.8V. It is able to unlock 50times after that
Driver	Direct Current Micro Motor
Lock body	Anti-theft digital mortise lock body
Service Life	More than 30,0000 times unlocking

4. Functions and Operations

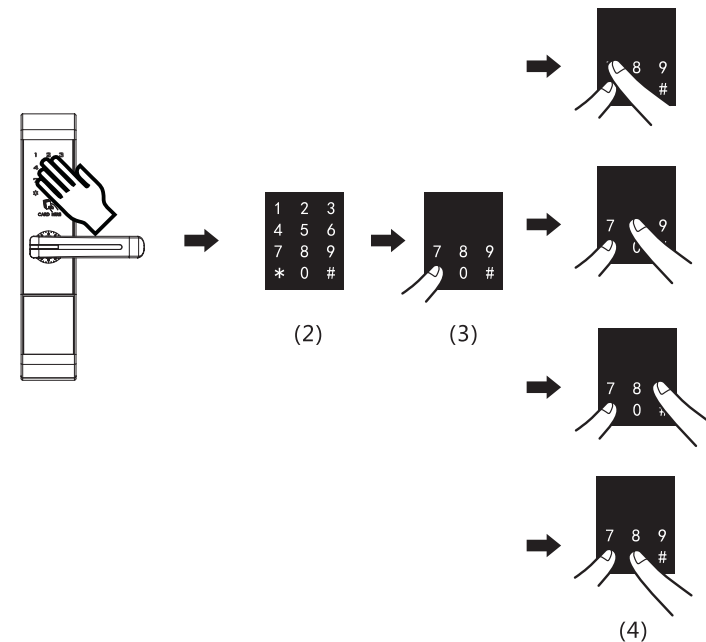
Remarks: Activate the panel by touching it by palm or hand back in advance to unlock by passwords or set the door locks.

It is better to touch the panel with more fingers or larger area of hand back.



It shows as picture (2) when the panel is activated. Input passwords to unlock it.

To set the door lock, press "*" tight after the panel is activated as picture (3), in the mean time press key 7, 8, 9 or 0 to enter different mode of settings as picture (4).



Functions details as bellow:

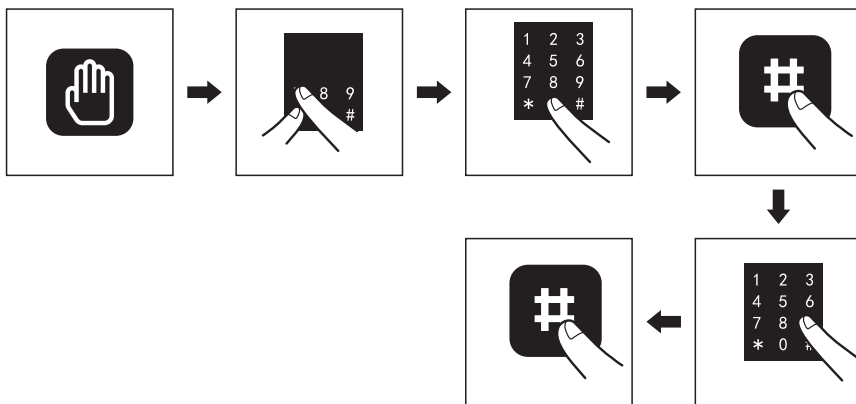
Initial user password is "123456".

Initial management password is "0000" (Management password cannot unlock the lock).

1). Change the management password.

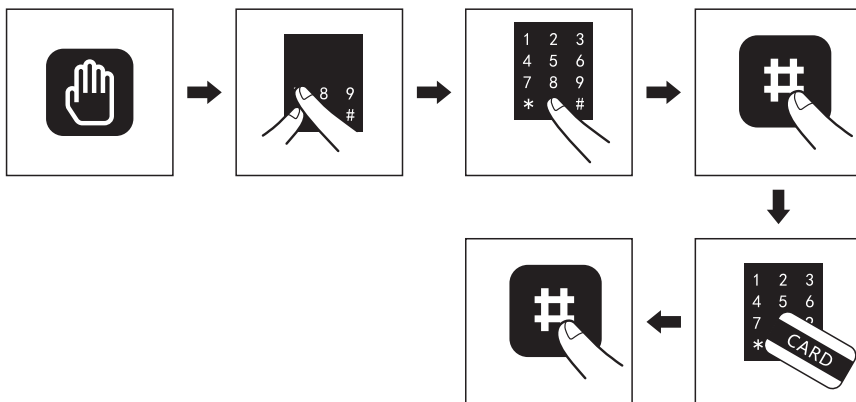
Press (*) for 2s , in the mean time press "7", then input management passwords plus "#".

Settings finish. Remarks: New management password will replace the old one.



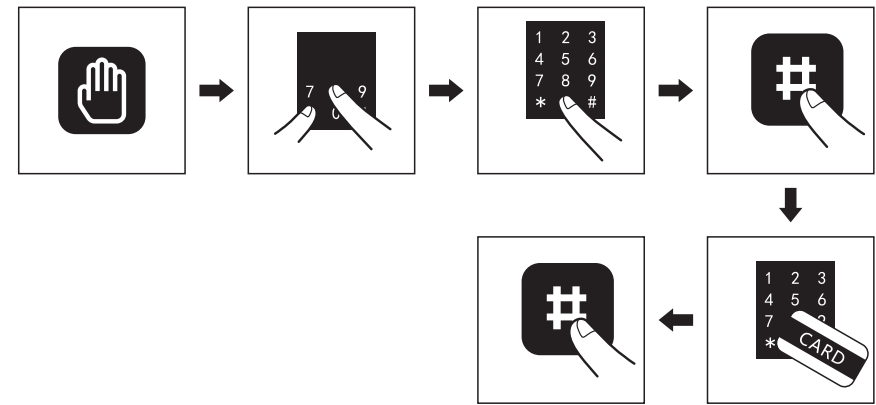
2). Change the management card.

Press (*) for 2s , in the mean time press "7", then input management passwords plus "#", then read the new management card. Settings finish. Remarks: New management card will replace the old one.

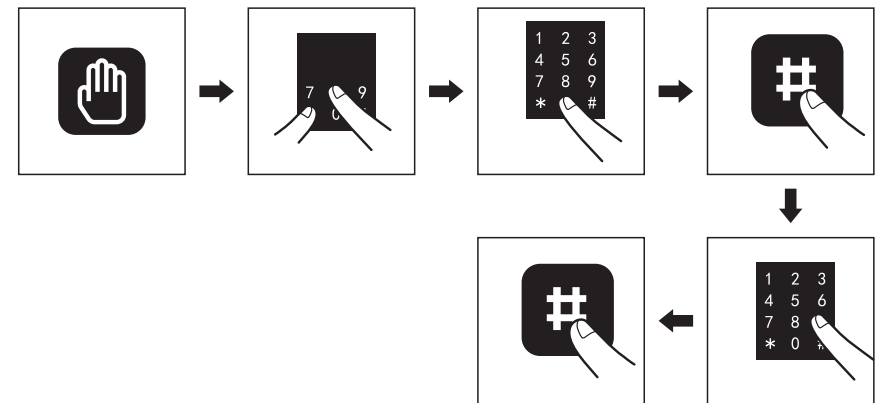


3). Add new user cards or new user passwords.

Press (*) for 2s , in the mean time press "8", then input management passwords plus "#", then read blank card and press "#" to exit. Repeat for more user cards.



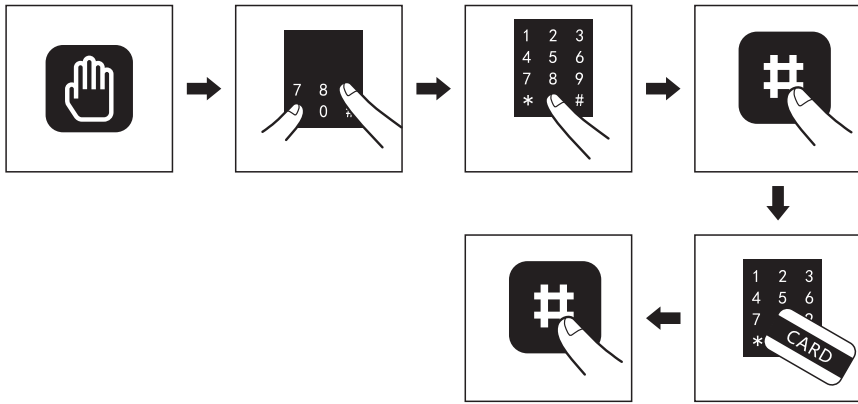
Press (*) for 2s , in the mean time press "8", then input management passwords plus "#", then input new user passwords and press "#" to exit. Repeat for more user passwords.



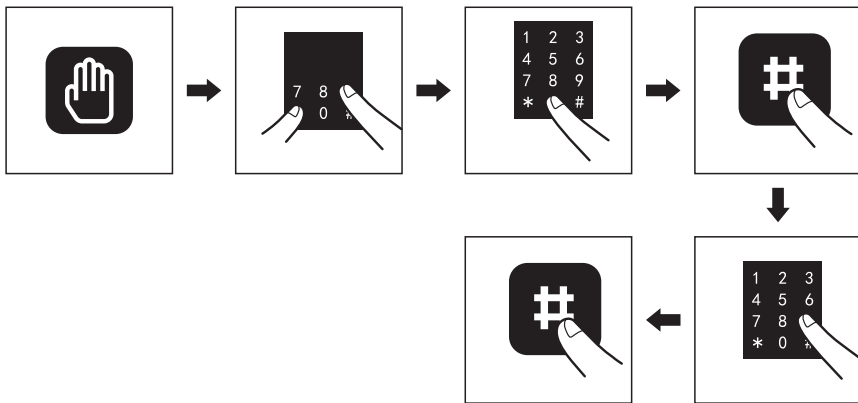
4). Delete user cards or user passwords.

(Only can delete user cards or user passwords one by one, but the management card or management password will not be changed.)

Press (*) for 2s , in the mean time press "9", then input management passwords plus "#", then read user card and press "#" to exit. Repeat to delete more user cards.



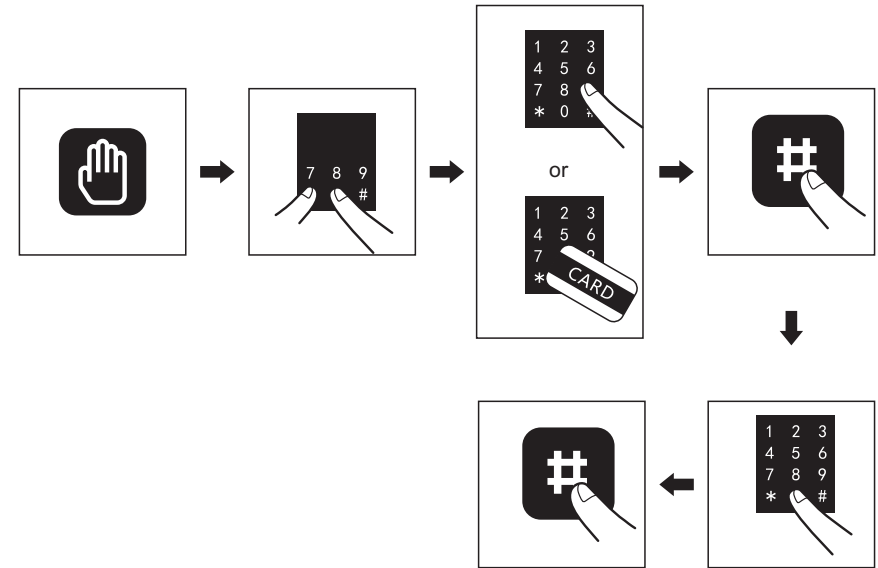
Press (*) for 2s , in the mean time press “9”,then input management passwords plus “#”, then input user passwords and press “#” to exit. Repeat to delete more user passwords.



5). Factory Reset.

(All cards or passwords will be deleted, and the management password will be reset to factory original one: 0000.)

Press (*) for 2s , in the mean time press “0”, then input management passwords plus “#” or read management card plus “#”, then press “0” and press “#” to exit. Setting finished.



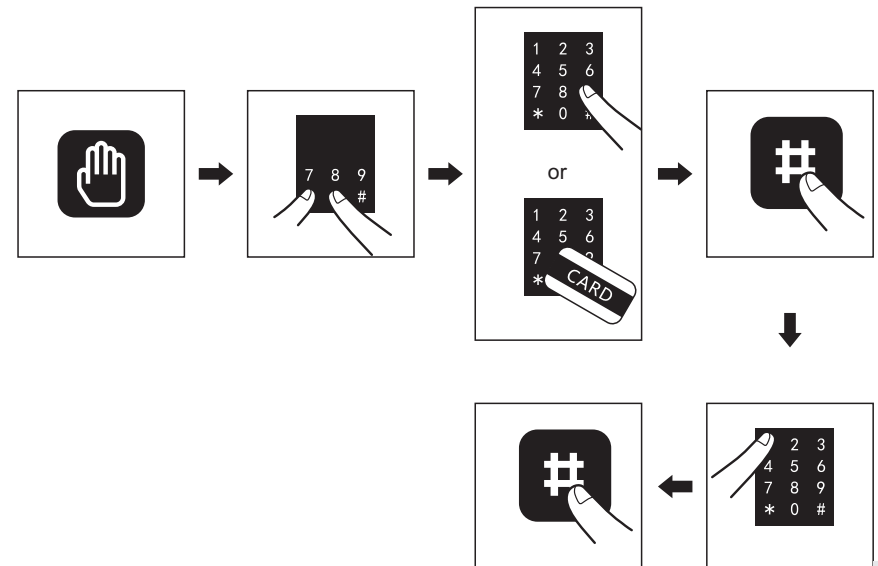
6). Unlock Mode and Mode Setting.

Remarks: Default Mode is Mode (1).

Mode (1): Password mode or Card mode. Unlock the lock by any valid password or card.

Setting: Press (*) for 2s , in the mean time press “0”, then input management passwords plus “#” or read management card plus “#”, then press “1” and press “#” to exit.

Setting finished.

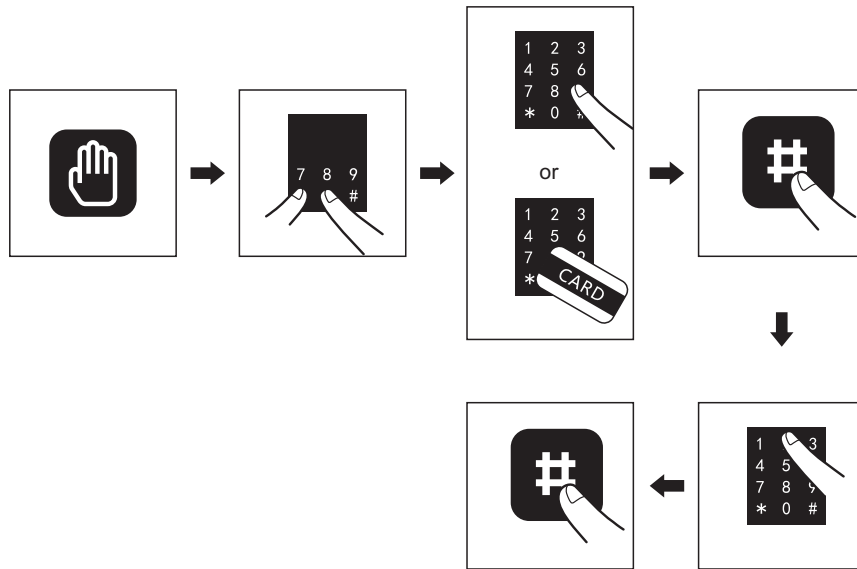


Mode (2): Coordination unlocking of approval by valid user card and valid user password.

It is OK to read the valid card or to input the valid password in advance.

Setting: Press (*) for 2s , in the mean time press "0", then input management passwords plus "#".

Setting finished.



7). Others.

a. The lock will alarm for 10times when inputting wrong passwords for 4times continuously.

The keypad will be locked for 60s when entering wrong passwords for 7times continuously.

b. Anti-peep Function: Input the passwords like XXX+ passwords+ XXX, namely add messy codes before or after the passwords and press "#". Passwords should be within the last 24 numbers uninterruptedly.

c. Factory Reset Function :

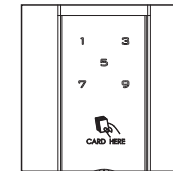
Unload the batteries case cover, press the button (ADEL) for 3s and the red light flashing.

Factory Reset will clear all user cards, passwords. Management passwords is "0000", the lock is in Mode (1) automatically.

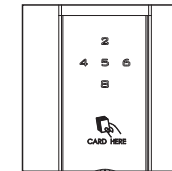


5. Sound indicates

"Duo Rei Mi"	Unlock or lock the door lock
Short "Dee"	Key sound
"Dee..."	Mechanical key or Passage mode activated.
Long "Dee"	Clear activated
"Dee" for 4times	Wrong mode
"Dee Da"	Valid password or valid card.
"Dee Da Dee Da"	Password or card setting finished.
Alarm whistle once	Invalid password or invalid card.
Alarm whistle for 10times	Inputting wrong passwords for 3times continuously.
Alarm whistle for 10times and lock keypad for 60s	Inputting wrong passwords for 7times continuously.



(P1)



(P2)

It indicates invalid passwords or invalid card or incorrect operation.(P1)

Input user password or read user card under Mode (2): Coordination unlocking of approval by valid user card and valid user password.(P2)

6. Using emergency key

Unlock or lock the door lock by emergency key in bellow scenes:

a. Lost passwords.

b. Batteries run out of power.

c. PCB broken.

Slide down the keyhole cover outside and insert the emergency key to unlock or lock.