

Model : 707.15.170
 Size : 4,5/1-4/2-5
 Hold Open Application

Optional Hold-open arm. Identify direction of hold-open nut according to mounting.

REGULATING DOOR SPEED AND LATCHING SPEED
 TURN SPEED REGULATING VALVE CLOCKWISE TO SLOW COUNTER-CLOCKWISE TO SPEED UP DOOR MOVEMENT

TURN BC REGULATING VAVE CLOCKWISE TO INCREASE OR COUNTER CLOCKWISE TO DECREASE. NEVER CLOSE THIS VALVE COMPLETELY.

POSITION OF ARMS AND INDEX SETTINGS

CLOSING SPEED CONTROL

CAUTION: DO NOT BACK VALVES OUT OF CLOSER OR A LEAK WILL RESULT

ATTENTION:
 ADJUST CLOSING SPEED TIME TO BETWEEN 4 TO 6 SECONDS FROM 90° OF THE DOOR, HANDICAPPED, ELDERLY OR SMALL CHILDREN MAY REQUIRE LONGER CLOSING TIME.

◆ STANDARD INSTALLATION: PULL SIDE RIGHT HAND DOOR INSTALLATION

- RIGHT HAND DOOR ILLUSTRATED SAME DIMENSIONS APPLY TO LEFT HAND DOOR
- MEASURED FROM HINGE C DIMENSIONS ARE IN $\frac{\text{inches}}{\text{(mm)}}$
- DO NOT SCALE DRAWING

* ADJUST SPRING TENSION ACCORDING TO THE FOLLOWING CHART

MODEL	DOOR WEIGHT LBS (KGS)	SIZE	FULL TURNS ADJUST
1-4	-55 (- 25)	1	-8
	55-99 (25-455)	2	-4
	99-143 (45-65)	3	0
	143-187 (65-85)	4	5
2-5	99-143 (45-65)	2	-6
	143-187 (65-85)	3	0
	187-264 (85-120)	4	4
	264-330 (120-150)	5	9

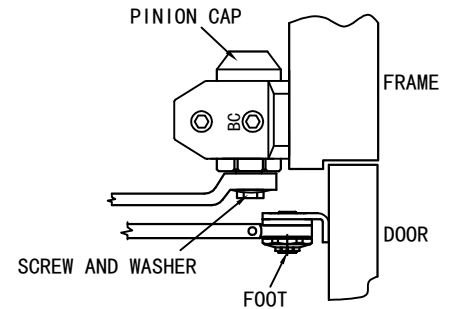
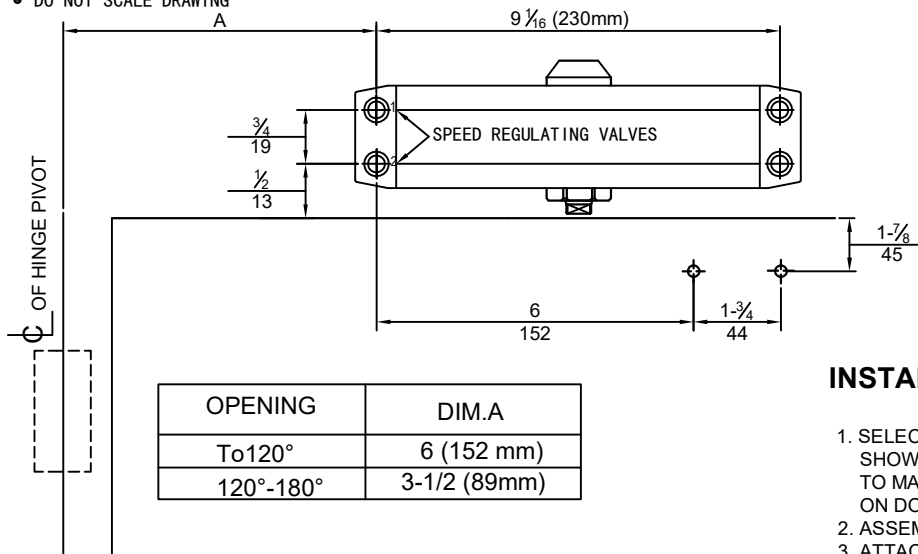
* NOTE: FACTORY PRESET SIZE 3
 MAX. 13 FULL TURNS FROM MIN. SETTING.

INSTALLATION INSTRUCTIONS:

- SELECT OPENING DEGREE OF DOOR. USE DIMENSIONS SHOWN IN CHART (SAME WITH TOP JAMB DIMENSION) AND ILLUSTRATION ABOVE, TO MARK LOCATION OF ATTACHING SCREWS. ON DOOR AND FRAME PREPARE HOLES.
- ASSEMBLE MAIN ARM TO CLOSER.
- ATTACH CLOSER TO DOOR WITH SPEED REGULATING VALVES TOWARDS TO HINGE.
- ATTACH THE FOOT OF THE FOREARM TO FRAME.
- ADJUST LENGTH OF FOREARM AT RIGHT ANGLE TO RAME TIGHTEN THE SCREW OF FOREARM.
- SNAP PINION CAP OVER SPINDLE AT BOTTOM OF CLOSER.
- ADJUST DOOR CLOSER.
- LOOSEN THE INNER HEX SCREW AT THE ELBOW OF THE FOREARM, OPEN THE DOOR TO THE STOP ANGLE YOU NEED, THEN TIGHEN THE INNER HEX SCREW TO HOLD THE DOOR OPEN.

PUSH SIDE TOP JAMB INSTANTION

- LEFT HAND DOOR ILLUSTRATED SAME DIMENSIONS APPLY TO RIGHT HAND DOOR
- MEASURED FROM HINGE ϕ DIMENSIONS ARE IN $\frac{\text{inches}}{\text{(mm)}}$
- DO NOT SCALE DRAWING

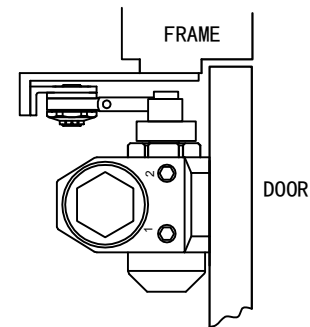
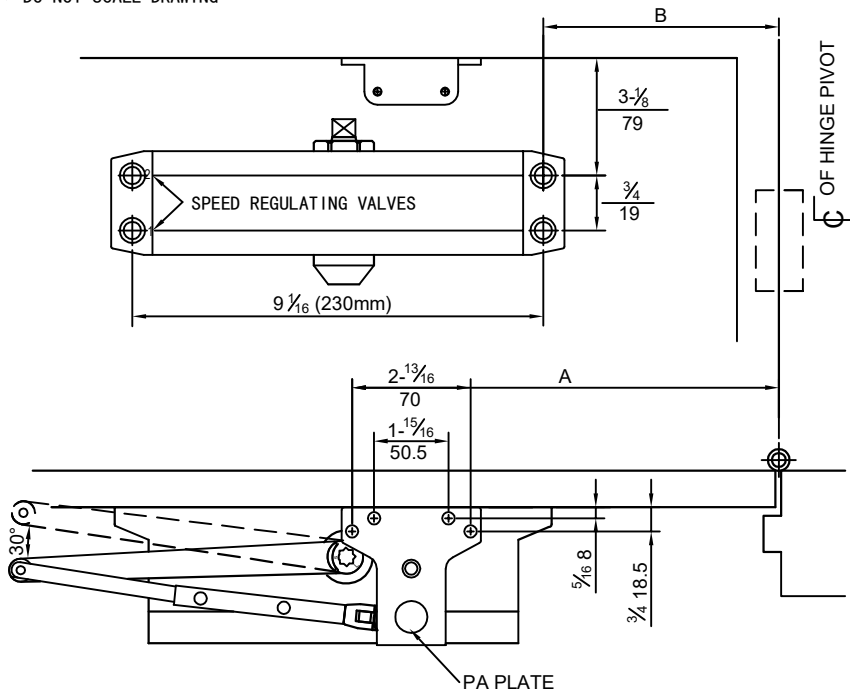


INSTALLATION INSTRUCTIONS:

1. SELECT OPENING DEGREE OF DOOR. USE DIMENSIONS SHOWN IN CHART AND ILLUSTRATION ABOVE, TO MARK LOCATION OF ATTACHING SCREWS. ON DOOR AND FRAME PREPARE HOLES.
2. ASSEMBLE MAIN ARM TO CLOSER.
3. ATTACH CLOSER TO DOOR WITH SPEED REGULATING VALVES TOWARDS TO HINGE.
4. ATTACH THE FOOT OF THE FOREARM TO FRAME.
5. ADJUST LENGTH OF FOREARM AT RIGHT ANGLE TO FRAME TIGHTEN THE SCREW OF FOREARM.
6. SNAP PINION CAP OVER SPINDLE AT BOTTOM OF CLOSER.
7. ADJUST DOOR CLOSER.
8. LOOSEN THE INNER HEX SCREW AT THE ELBOW OF THE FOREARM, OPEN THE DOOR TO THE STOP ANGLE YOU NEED, THEN TIGHTEN THE INNER HEX SCREW TO HOLD THE DOOR OPEN.

PUSH SIDE PARALLEL INSTALLATION

- LEFT HAND DOOR ILLUSTRATED SAME DIMENSIONS APPLY TO RIGHT HAND DOOR
- MEASURED FROM HINGE ϕ DIMENSIONS ARE IN $\frac{\text{inches}}{\text{(mm)}}$
- DO NOT SCALE DRAWING



INSTALLATION INSTRUCTIONS:

1. SELECT OPENING DEGREE OF DOOR. USE DIMENSIONS SHOWN IN CHART AND ILLUSTRATION ABOVE TO MARK LOCATION OF ATTACHING SCREWS. ON DOOR AND FRAME PREPARE HOLES.
2. ATTACH CLOSER TO DOOR WITH SPEED REGULATING VALVES TOWARDS TO HINGE.
3. ATTACH MAIN ARM AS FOLLOE:
 - (A) PLACE OPEN END WRENCH ON BOTTOM SHAFT & TURN TOWARD HINGE ABOUT 30°.
 - (B) PLACE MAIN ARM ON TOP SHAFT, INSERT ARM SCREW INTO TOP OF SHAFT AND TIGHTEN.
4. ATTACH PA PLATE TO TOP FRAME AS SHOWN.
5. FASTEN FOREARM TO PA PLATE.
6. ADJUST LENGTH OF FOREARM TO POSITION MAIN ARM AT PARALLEL TO FRAME WHEN CONNECTED TO MAIN ARM AT ELBOW. USE WASHER AND SCREW PROVIDED TO SECURE PIVOT CONNECTION. TIGHTEN LOCK NUT.
7. SNAP PINION CAP OVER SPINDLE AT BOTTOM.
8. LOOSEN THE INNER HEX SCREW AT THE ELBOW OF THE FOREARM, OPEN THE DOOR TO THE STOP ANGLE YOU NEED, THEN TIGHTEN THE INNER HEX SCREW TO HOLD THE DOOR OPEN.

OPENING	DIM.A	DIM.B
To 120°	7-3/4 (197mm)	6-1/8 (156mm)
120°-180°	5-3/4 (146mm)	4-1/8 (105mm)