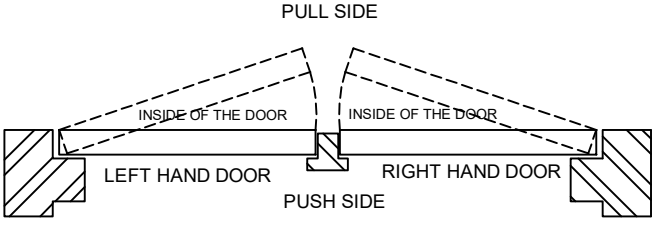
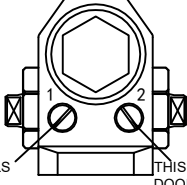
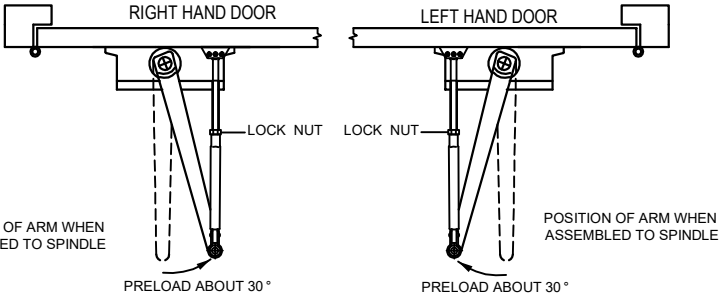
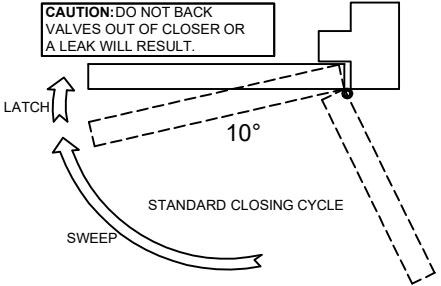
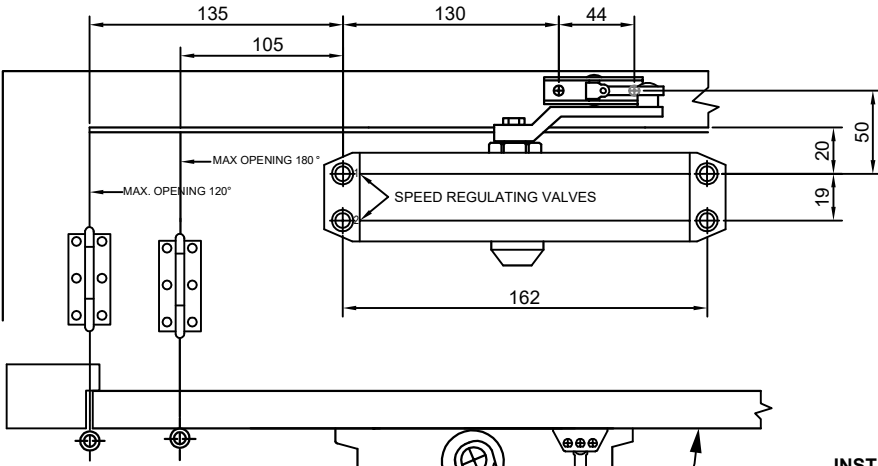
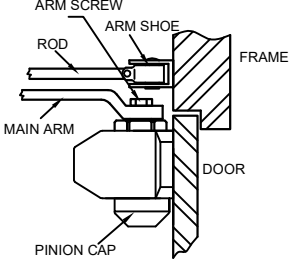


707.11.600 / 707.12.600 SERIES DOOR CLOSER INSTALLATION INSTRUCTION

<p>①</p> 	<p>②</p> <p>REFULATING DOOR SWEEP AND LACTHING SPEED</p> <p>◆ TURN SPEED REGULATING VALVE CLOCKWISE TO SLOW DOWN OR COUNTER CLOCKWISE TO SPEED UP DOOR MOVEMENT</p>  <p>THIS VALVE CONTROLS DOOR SWEEP SPEED. THIS VALVE CONTROLS DOOR LACTHING SPEED.</p>
<p>③</p> <p style="text-align: center;">POSITION OF ARMS</p>  <p>POSITION OF ARM WHEN ASSEMBLED TO SPINDLE POSITION OF ARM WHEN ASSEMBLED TO SPINDLE</p>	<p>④</p> <p>CLOSING SPEED CONTROL</p> <p>CAUTION: DO NOT BACK VALVES OUT OF CLOSER OR A LEAK WILL RESULT.</p> 

◆REGULAR ARM APPLICATION (PULL SIDE)

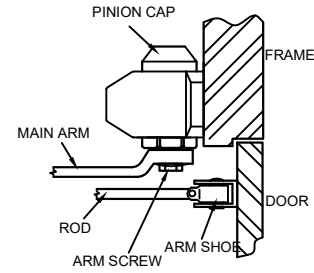
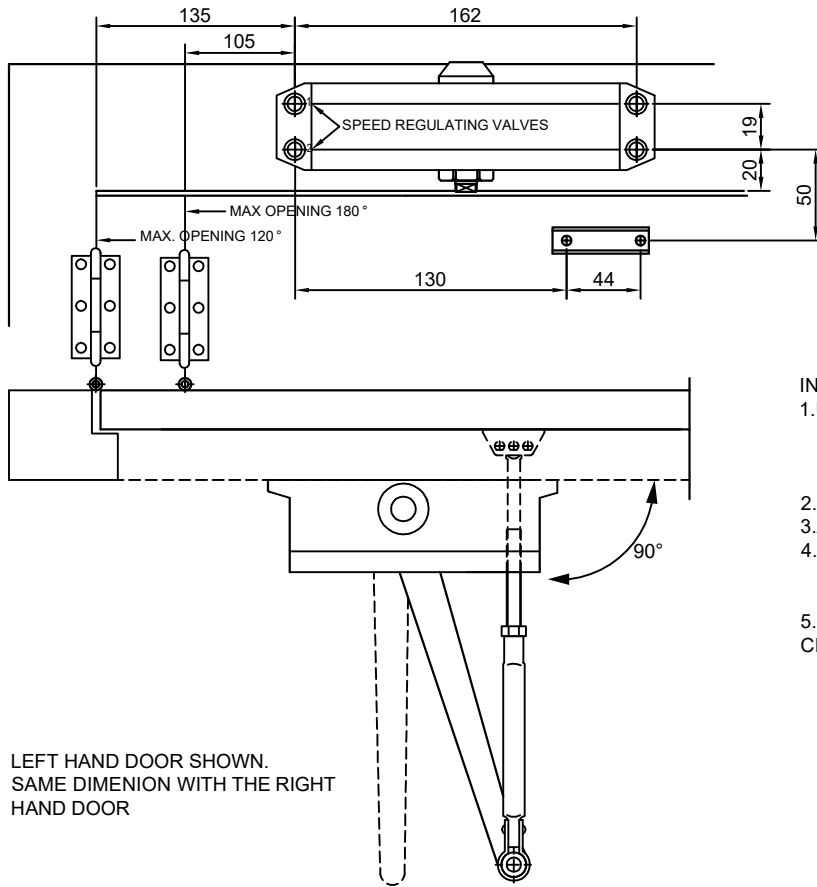
 <p>RIGHT HAND DOOR SHOWN. SAME DIMENSION WITH THE LEFT HAND DOOR</p>	 <p>ARM SCREW ARM SHOE ROD MAIN ARM PINION CAP FRAME DOOR</p>
<p>INSTALLTION STEPS:</p> <ol style="list-style-type: none"> 1. USE DIMENTIONS SHOWN IN CHART ABOVE TO DRILL HOLES ON DOOR AND DOOR FRAME; ASSWMBLE THE CLOSER BODY. <u>ATTENTION: SPEED REGULATING VALVES TOWARDS HINGE.</u> 2. ASSEMBLE MAIN ARM ON SPINDLE. 3. ATTACH ROD AND ARM SHOE ON FRAME. 4. ADJUST LENGTH OF THE ROD TO LOCATE IT AT RIGHT ANGLE TO THE FRAME. PRELOAD ABOUT 30° CONNECT ROD AND MAIN ARM WITH SCREWS. 5. SNAP PINION CAP OVER SPINDLE AT BOTTOM OF CLOSER. 	



NOTE :

1. DOOR CLOSER HAS THE FUNCTION TO CLOSE THE DOOR AUTOMATICALLY; NO EXTRA FORCE IS EXERTED, OTHERWISE, THE CLOSER MAY BE DAMAGED.
2. WE WON'T BE RESPONSIBLE FOR ANY DAMAGE BECAUSE OF WRONG MOUNTING WAY AND DIMENTION WHICH IS NOT IN CONFORMITY WITH THIS INSTRUCTION.

◆ TOP JAMB APPLICATION (PUSH SIDE)

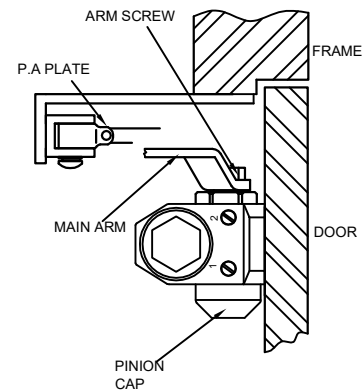
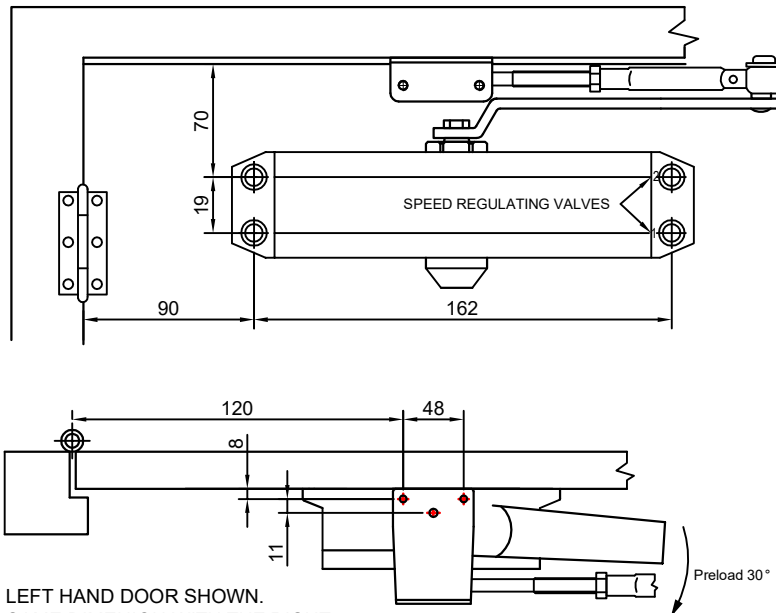


INSTALLATION STEPS:

1. USE DIMENSIONS SHOWN IN CHART AND ILLUSTRATION ABOVE TO DRILL HOLES ON DOOR AND DOOR FRAME, ASSEMBLE THE CLOSER BODY. **ATTENTION: REGULATING VALVES TOWARDS HINGE.**
2. ASSEMBLE MAIN ARM ON THE SPINDLE.
3. ATTACH ROD AND ARM SHOE ON FRAME.
4. ADJUST THE LENGTH OF THE ROD TO LOCATE ROD AT RIGHT ANGLE TO THE FRAME. PRELOAD ABOUT 30°. CONNECT ROD AND MAIN ARM WITH THE SCREW.
5. SNAP PINION CAP OVER SPINDLE AT BOTTOM OF CLOSER.

FOR MODEL NO.: B3D (WITH BUILT IN HOLD OPEN FUNCTION), PLEASE CHOOSE 120° MOUNTING

◆ PARALLEL APPLICATION (PUSH SIDE)



INSTALLATION STEPS:

1. USE DIMENSIONS AS SHOWN TO DRILL HOLES ON DOOR AND DOOR FRAME; ASSEMBLE THE CLOSER BODY AND P.A. PLATE. **ATTENTION: REGULATING VALVES BACK TO HINGE.**
2. LOOSEN THE SCREW CONNECTING ROD AND MAIN ARM. THEN ATTACH ROD AND ARM SHOE ON P.A. PLATE.
3. INSTALL MAIN ARM ON PINION SHAFT WITH IT PARALLEL WITH THE DOOR.
4. PRELOAD THE MAIN ARM ABOUT 30° AS THE DIRECTION ILLUSTRATED TO MAKE THE ROD PARALLEL WITH THE DOOR. THEN TIGHTEN THE LOCK NUT CONNECTING ROD AND MAIN ARM.
5. SNAP PINION CAP OVER SPINDLE AT BOTTOM OF CLOSER.