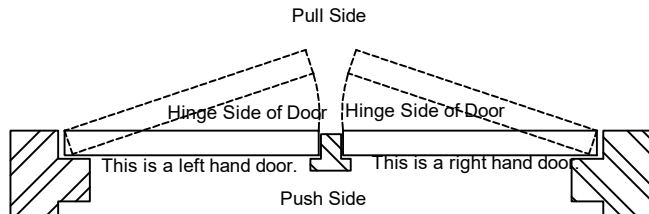


# 707.11.400 DOOR CLOSER

## INSTALLATION INSTRUCTION

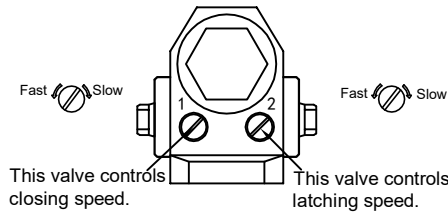
### Chart to determine hand of door



### Adjustment after installation

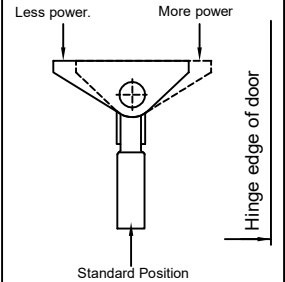
#### Regulating closing speed and latching speed

- Turn speed regulating valve clockwise to slow down or counter clockwise to speed up door movement



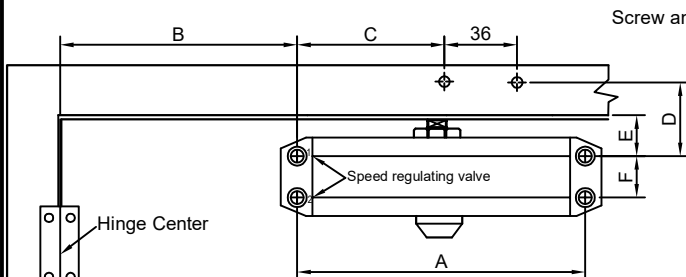
#### Adjusting foot for closing power

Move the foot as illustrated below:



### REGULAR ARM APPLICATION (PULL SIDE)

RIGHT HAND DOOR ILLUSTRATED  
SAME DIMENSION APPLY TO LEFT HAND DOOR



(mm)

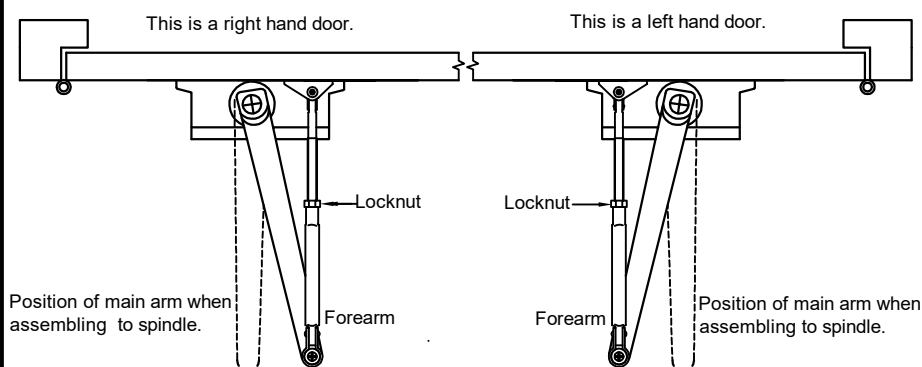
DIMENSIONS MODEL	A	B	C	D	E	F	OPENING
B2W	132	100	88	48	20	19	120°
	132	70	88	48	20	19	180°
B2D	132	112	80	48	20	19	90°

W: without hold open.  
D: With built-in hold open.

#### INSTALLATION STEPS

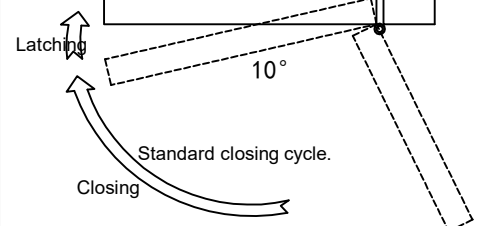
1. Select degree of door. Use dimensions as shown to drill holes on door and frame.
2. Attach closer to door with speed regulating valves towards hinge.
3. Assemble main arm to closer.
4. Attach the foot of the forearm to frame.
5. Adjust length of forearm to position forearm at right angle to frame. Use washer and screw provided to connect forearm and main arm.
6. Snap pinion cap over spindle at bottom of closer.

#### Position of main arm and installation



#### Closing speed control

CAUTION: Do not back valves out of closer or a leak will result.



Adjust closing speed time to between 4 and 6 seconds from 90°. Elderly and children may require longer closing time.

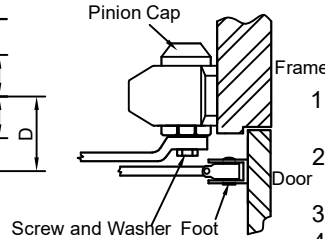
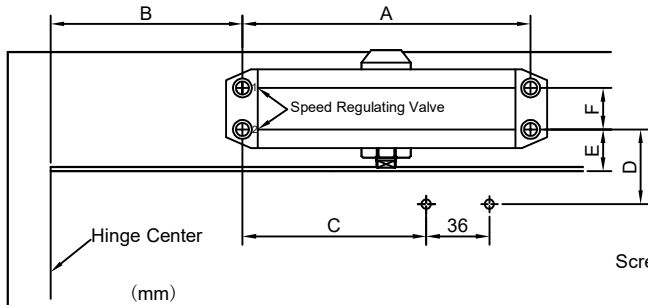
# 707.11.400 DOOR CLOSER

## INSTALLATION INSTRUCTION

### TOP JAMB APPLICATION (PUSH SIDE)

LEFT HAND DOOR ILLUSTRATED  
SAME DIMENSION APPLY TO RIGHT HAND DOOR

②



#### INSTALLATION STEPS:

1. Select degree of door. Use dimension as shown to drill holes on door and frame.
2. Attach closer to frame with speed regulating valves towards hinge.
3. Assemble main arm to closer.
4. Attach the foot of the forearm to door.
5. Adjust length of forearm to position forearm at right angle to door. Use washer and screw provided to connect forearm and main arm.
6. Snap pinion cap above spindle at top of closer.

(mm)

DIMENSIONS MODEL	A	B	C	D	E	F	OPENING
B2W	132	100	88	48	20	19	120°
	132	70	88	48	20	19	180°
B2D	132	112	80	48	20	19	90°

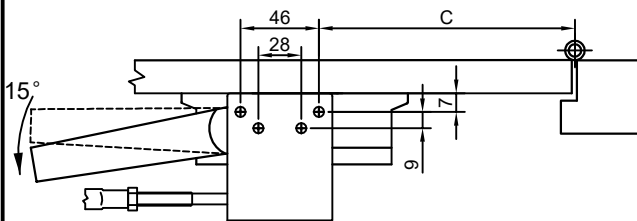
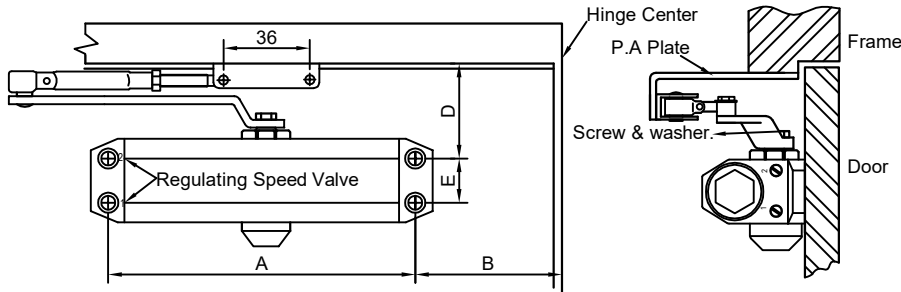
W: without hold open.

D: With built-in hold open.

### PARALLEL ARM APPLICATION (PUSH SIDE)

RIGHT HAND DOOR ILLUSTRATED  
SAME DIMENSIONS APPLY TO LEFT HAND DOOR.

③



#### INSTALLATION STEPS

1. Select degree of door. Use dimension as shown and to drill holes in door and frame. Attach the closer to the door.
2. Attach P.A. plate to top frame as shown.
3. Use main arm to preload the pinion shaft about 15° as shown, then tighten the main arm screw. At this time, the main arm preload power on the door.
4. Secure the foot on P.A. plate with screws.
5. Adjust the length of the forearm. Position the main arm parallel with frame when connecting forearm and main arm. Use washer and screw to connect main arm and forearm.
6. Snap pinion cap over spindle at bottom of closer.

(mm)

DIMENSIONS MODEL	A	B	C	E	F	OPENING
B2W	132	80	110	65	19	180°
B2D	132	90	160	65	19	150°

W: without hold open.

D: With built-in hold open.

DOOR WEIGHT: 20-45Kgs



#### Attention:

1. Door closer has the function to close the door automatically; no extra force is exerted, otherwise, the closer may be damaged.
2. Please install door closer according to the mounting way and dimension of this installation instruction.